

Chichen Itza , Mexico

J F Althouse

January 2004

























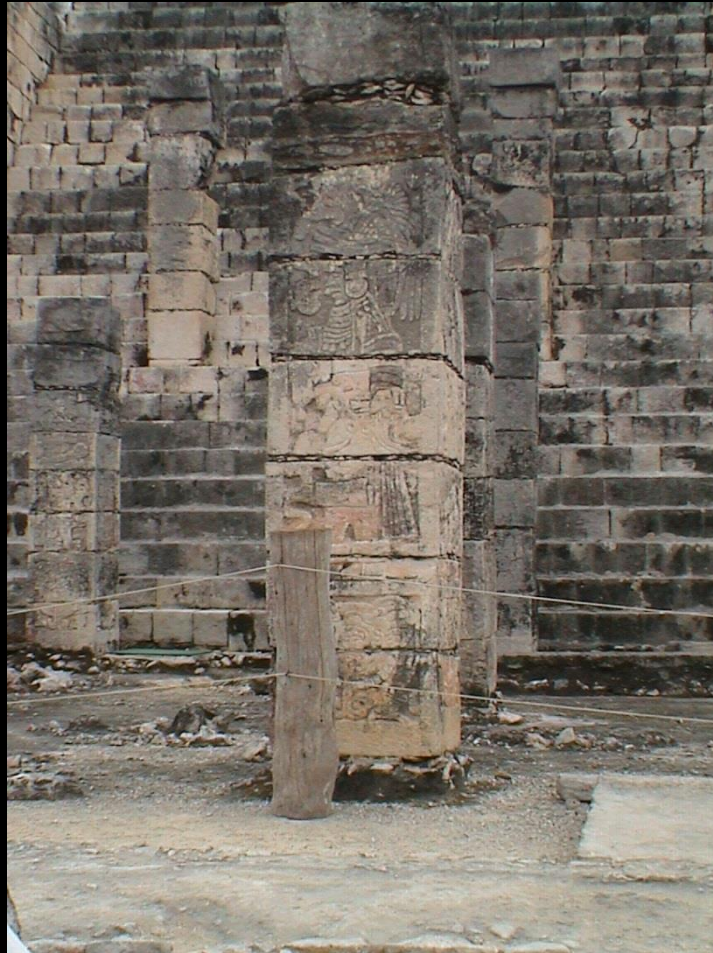
















































































































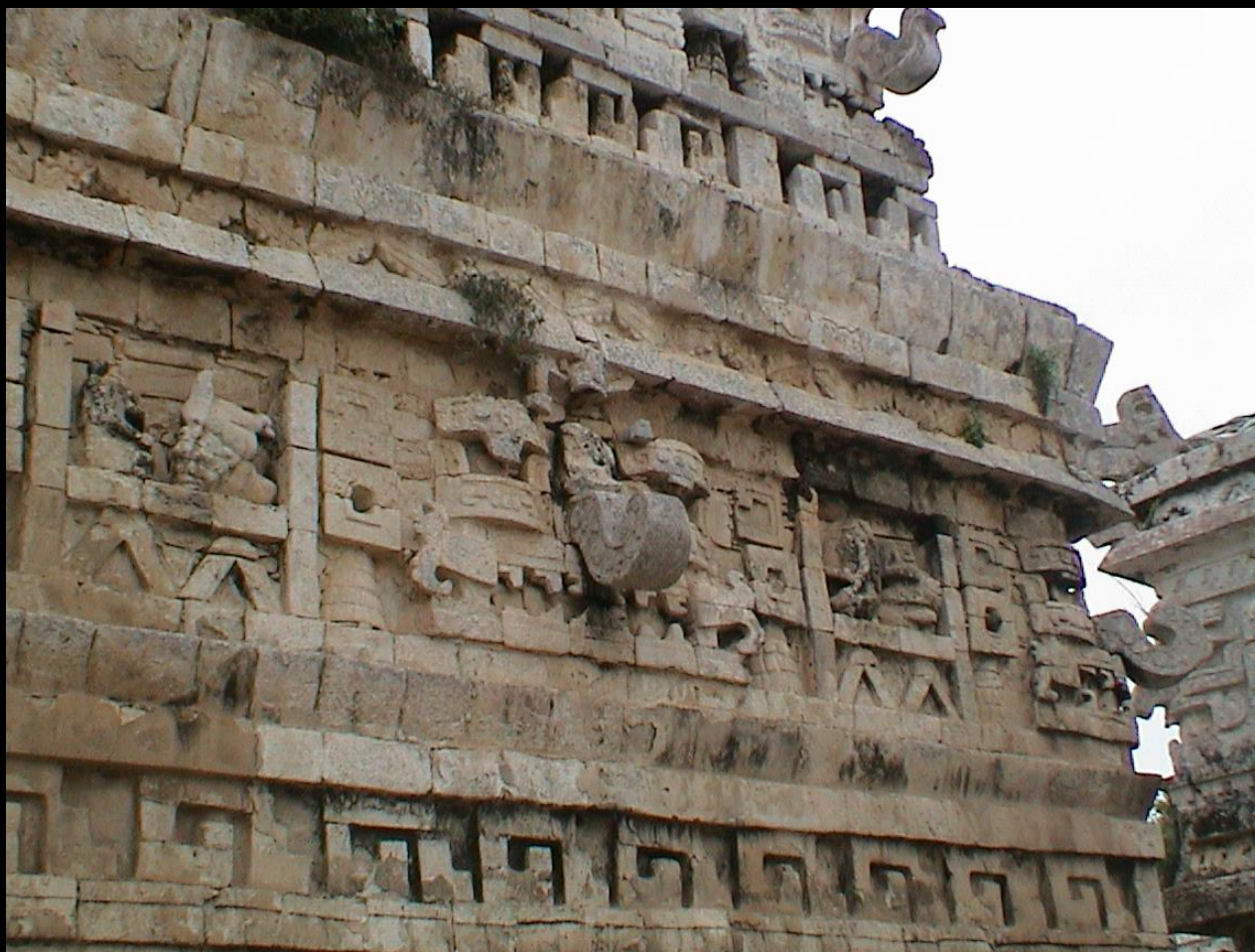


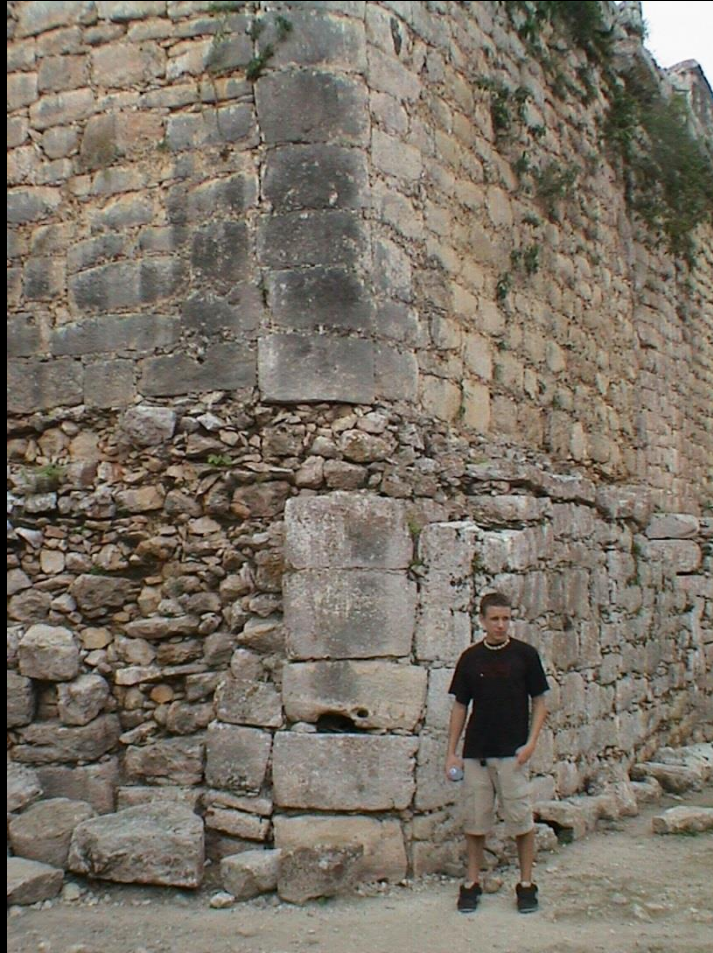




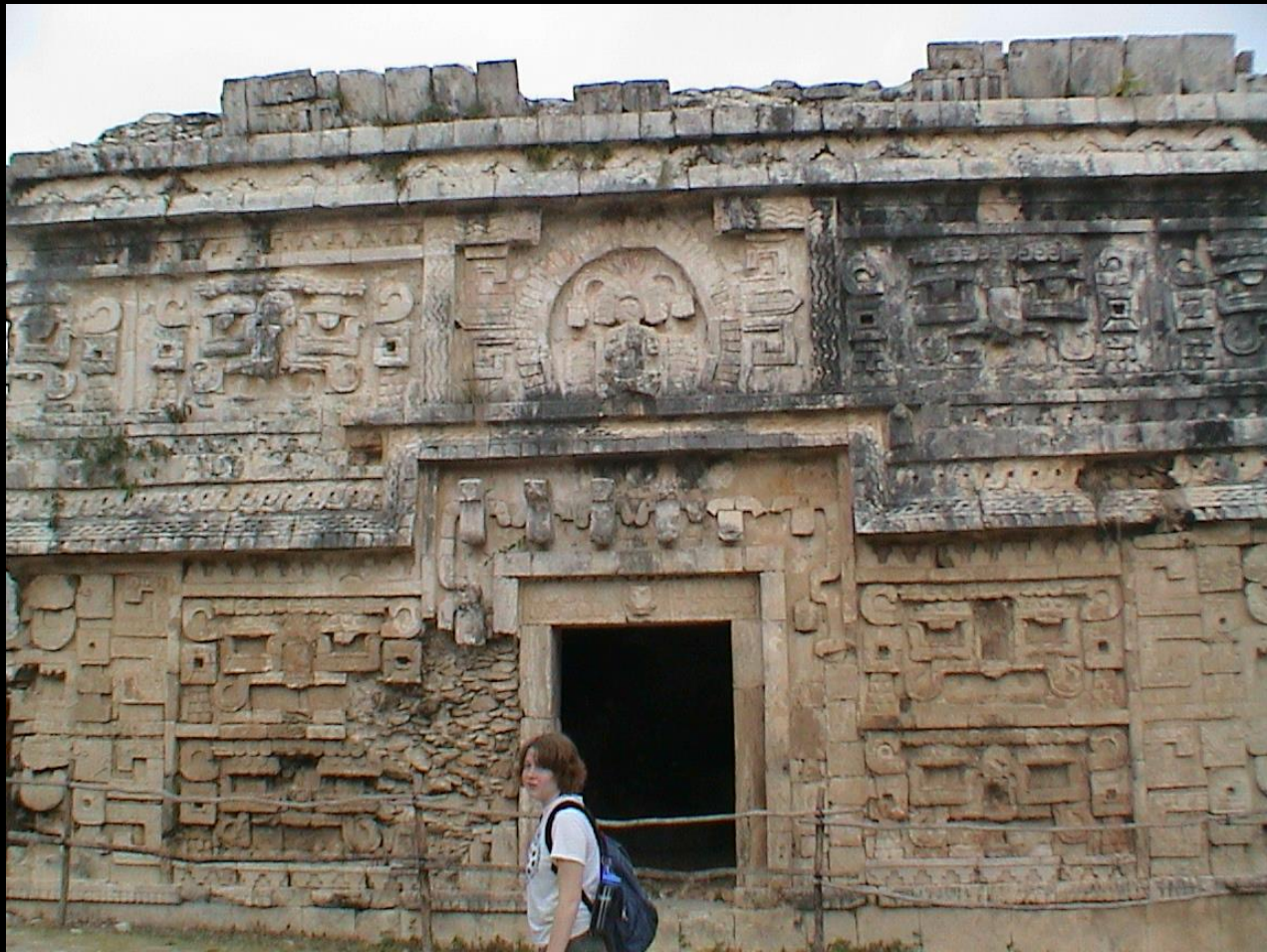




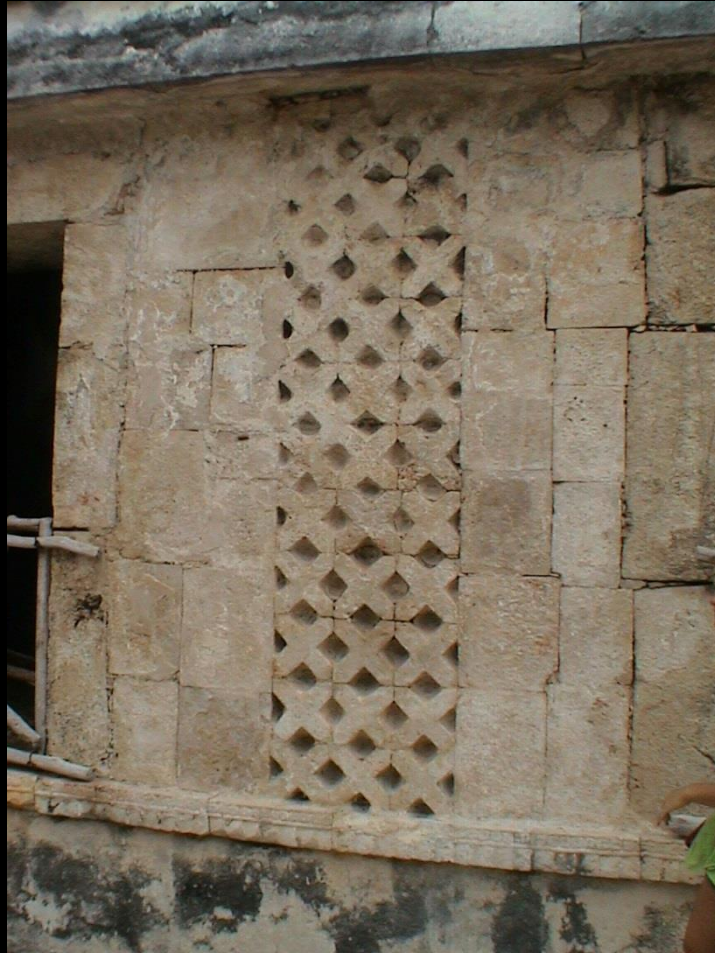




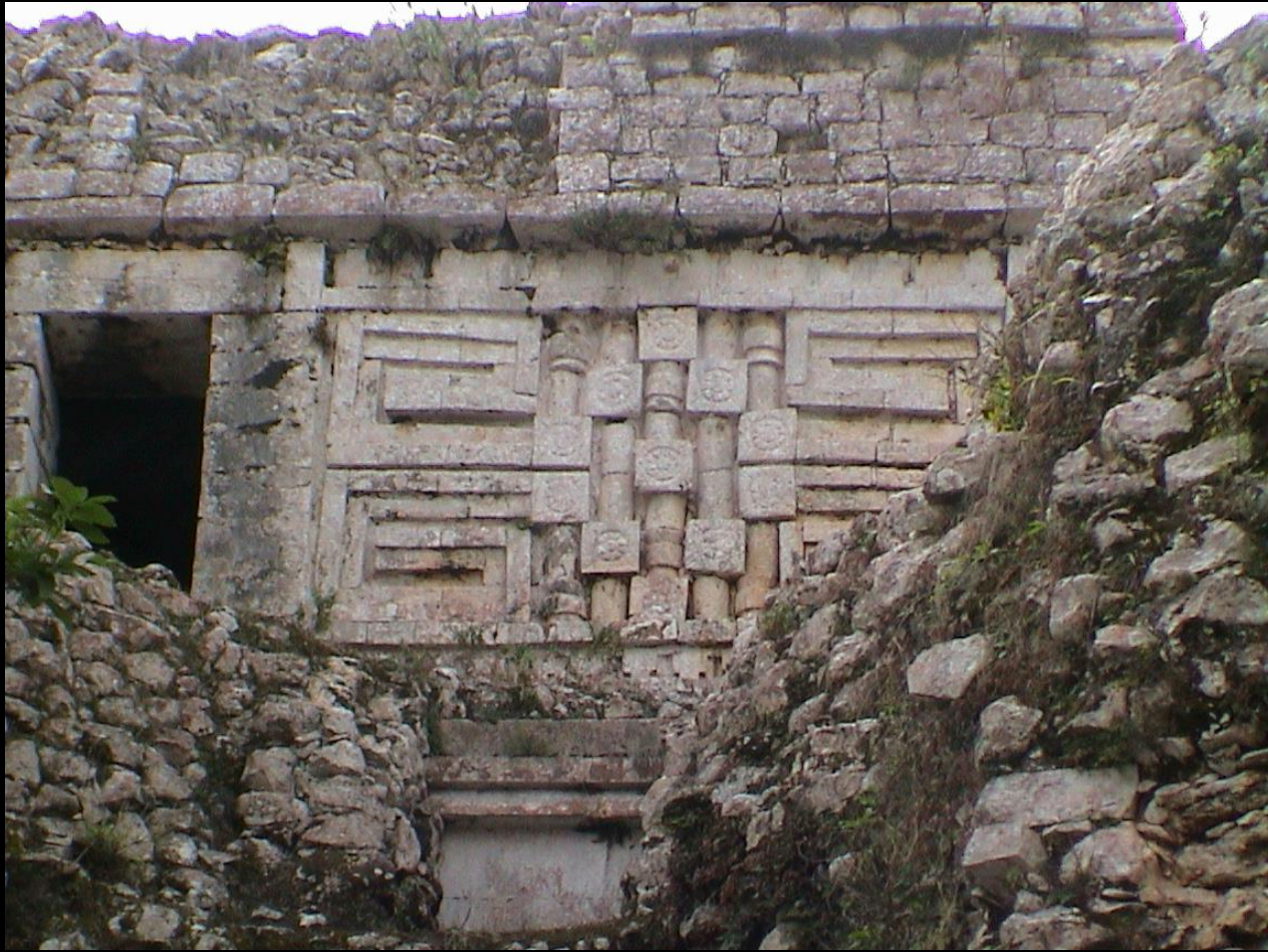












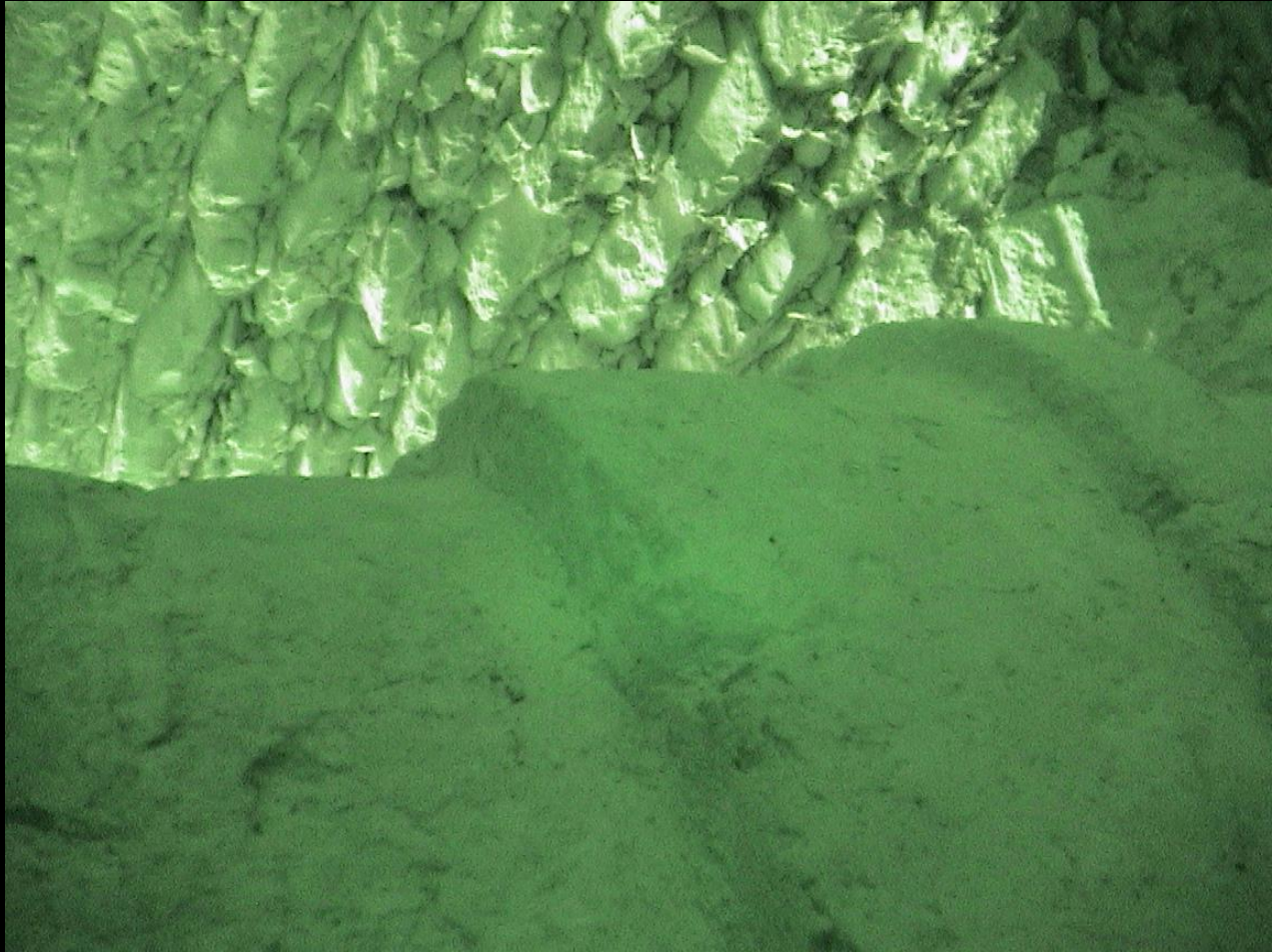


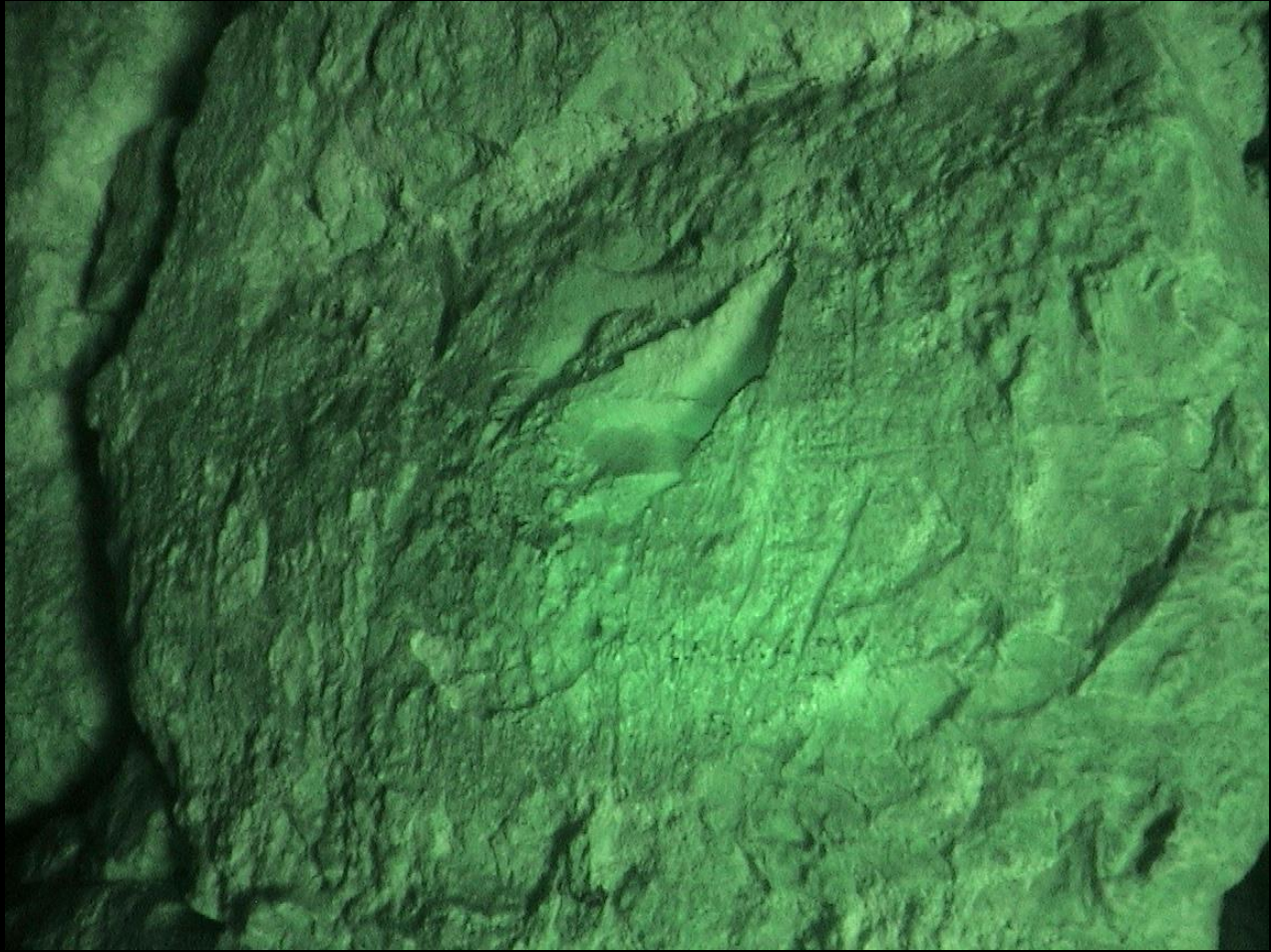










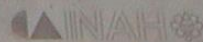








Plataforma de Venus y Plataforma Redonda



Plataforma de Venus y Redonda

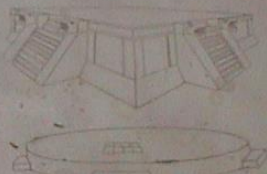
Venus es muy
un nombre en la
En sus relieves
de los panto-
fano-Serpiente,
una representacion
del-Kukulcán
Machón. Hacia
de la espada,
en las espadas
que se ha
Atado de los
de Venus. La
media en rojo,
negro. En la
moneda una
en el trazo
Plataforma
poco ejem-
plares. En la
frenda y en
de las. La
del proba-
en el de
las, ritos n

KA'ANAL BUTIL LU'UMIL NOJ EEK' YEETEL WOOLIS KA'ANAL BUTIL LU'UM

Le Ka'anal butil lu'umil noj eek' yeetel woollis
wa Le Plataformas de Venus jach
chiluh u'nti le bey xan u'li zaba yaan
tu k'ihel. Le nuch naja' wa el
Castillo. Tu t'oojan tuunich a be
yaan, tu ch'uumuhil le hoets paik
jatz utakina' oné, Juntul' mán
ch'ich' haan, lea' lu' bida al jump'el
u' r'ih'uhil Quetzalcoatl-Kukulcán
j'oon u' eek' ja'atkalon'. T' le
móna' b'oh' lu' j'at'at le j'at'at nuch
nuch eek' le pa'p'allo; tu t'ih'alo obe
k'ih' le ba'ax ts'u ya'ala al le K'ankil
ja'ab' o'ba' tu t'at'el le noj eek'. Le
lu' nuch butil lu'ume' bon' an' la'ach
y'at'el ch'ak, ya'ax, le nuch, ch'o
yeetel b'ok. Tu le'at'el eek' nuch a
jump'el k'uumil u' t'at'el Juntul'
má al j'at'el u' p'od. Le woollis
ka'anal butil lu'umo', jump'el t' u'
ya' eek' u' ch'at'el t' Ch' ch' en itza'
xan ka'ax u' jump'el ba'at'el
k'uumil yeetel jump'el ch'at'el bejil
j'at'el tuunich n'.

Platform of Venus and Round Platform

The Platform of Venus is very similar to the one of the same name in the Plaza of the Castle. In the center of one of its panels there is a relief of Serpent Bird Man, which is considered to be the representation of Quetzalcoatl - Kukulcán as the "Morning Star". Towards the stairway, one can observe the matting, which symbolizes power, and in the corners can be seen what has been interpreted as the "knotting of the Years" alongside the planet Venus. The platform was originally painted in red, green, ocre, blue and black. An offering, consisting of a skull of a decapitated man, was found in the eastern stairway. The Round Platform, one of the few buildings so shaped in Chichén Itzá, held a container with offerings and a small, stone-paved area. The function of these buildings was probably as podiums for ceremonies, rites or dances.



Usted está aquí. T'at'at' nuch naja' T'at'at' naja'

















